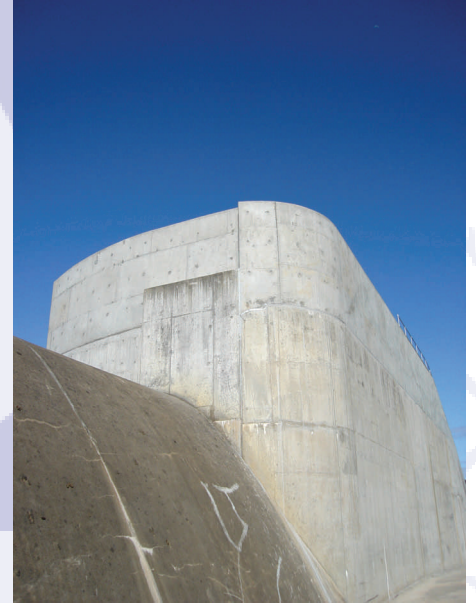


# 2008

# Completed projects

## Sunday Creek Reservoir Spillway Upgrade, VIC.



### Works Included

- Spillway upgrade.
- Structural concrete works associated with raising the spillway wall  $\approx 1200\text{m}^3$ .
- Construction of a weighting berm on the downstream face.
- Construction of a filter drainage system on the downstream face and toe of the existing embankment.
- Modifications to the existing outlet pipe, valve and pits.
- Excavation of  $30000\text{m}^3$  of graded material from onsite borrow pit for weighting berm.
- Aquaseeding of embankments.

### Site Issues

- Inclement weather.
- Limited space for stockpiling of material.
- Steep batter slopes, limiting access.
- Theft and vandalism.

#### Client:

Goulburn Valley Water

#### Representatives:

Peter Hull  
Lachlan McGregor

#### Project Design:

SKM Consulting

#### Project Manager:

Craig Johnson

Contract Sum : \$ 3.7 M



[www.entracon.com.au](http://www.entracon.com.au)